

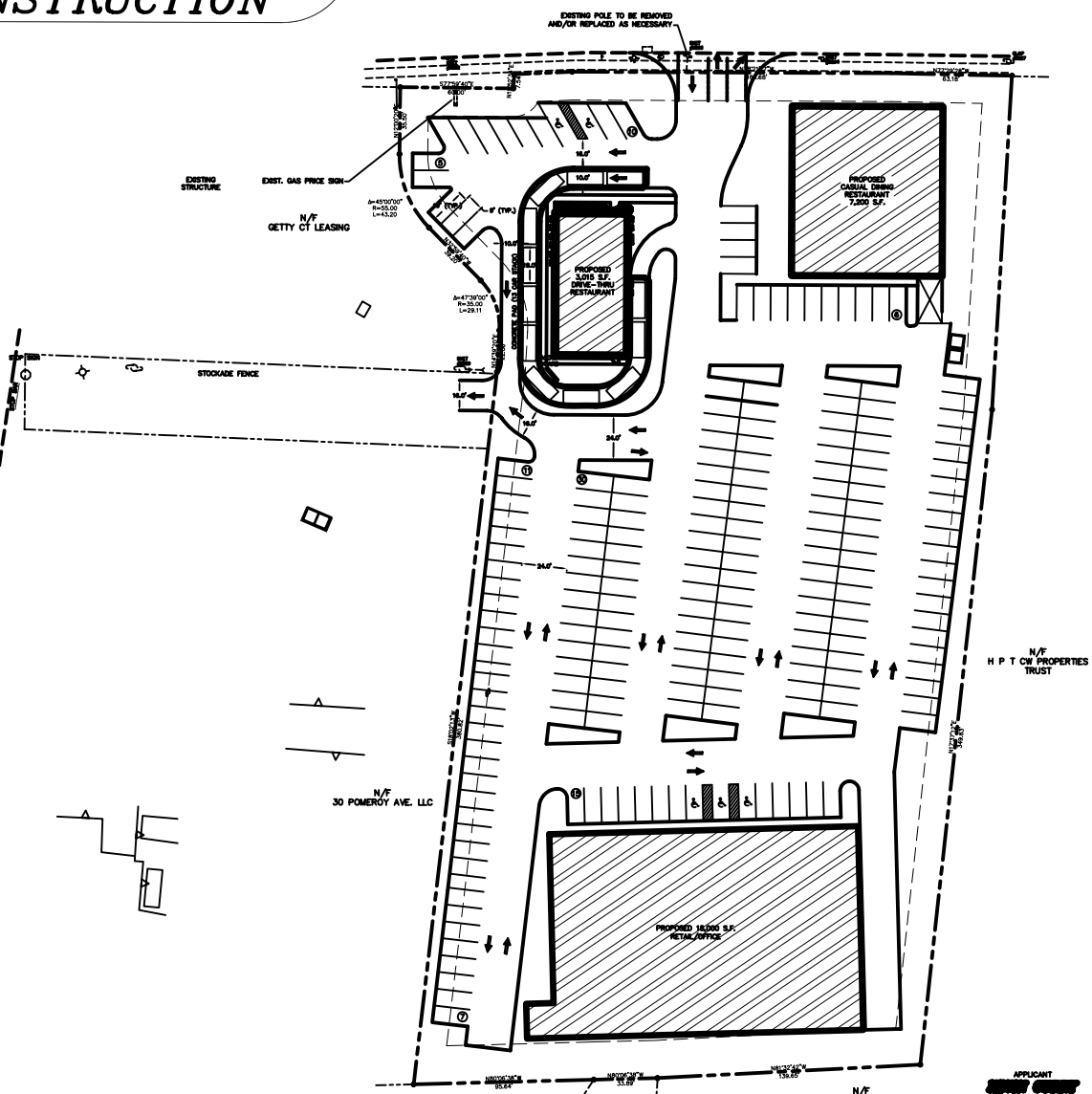
**PRELIMINARY
NOT FOR
CONSTRUCTION**



EAST MAIN STREET

ARLINGTON STREET

POMEROY AVENUE



TOTAL AREA
148,127 sq. ft.
3.35 acres

CONNECTICUT CONSULTING ENGINEERS, L.L.C.
PROFESSIONAL CIVIL ENGINEERS

CONCEPTUAL FF/R18K

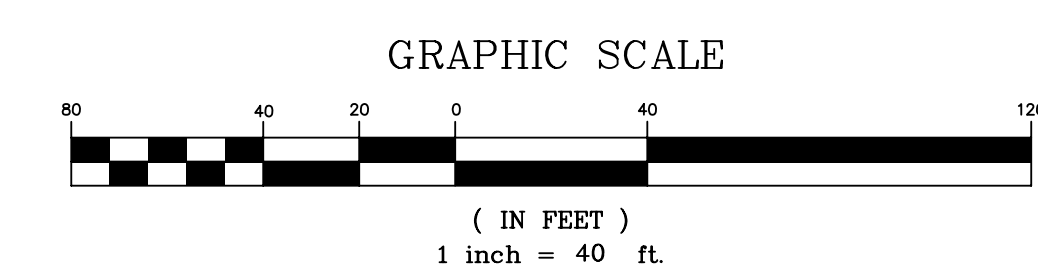
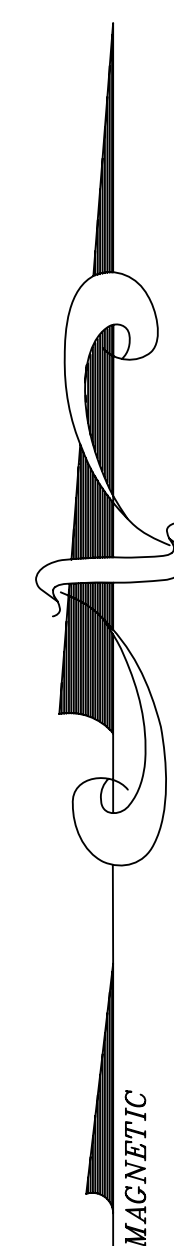
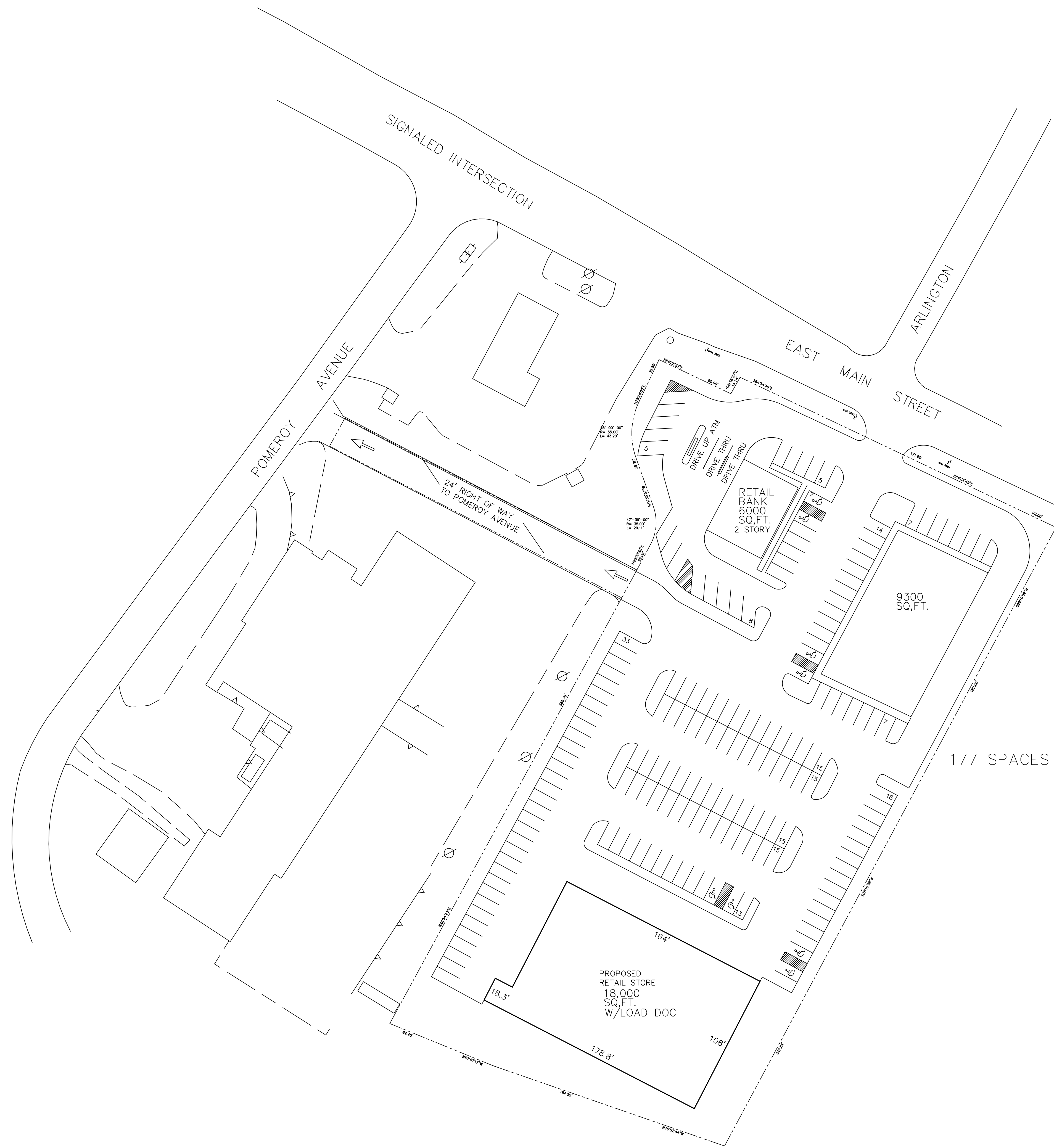
ONE PRESTIGE DRIVE
SUITE 110
203-636-0336
MERIDEN, CT

PREPARED FOR
**1185 EAST MAIN STREET, LLC,
DANBY ASSOCIATES, LLC &
NEWINGTON GAS DISTRIBUTORS, LLC**
OF 1185-1189 EAST MAIN STREET
1185, 1187 & 1189 EAST MAIN STREET
MERIDEN, CONNECTICUT

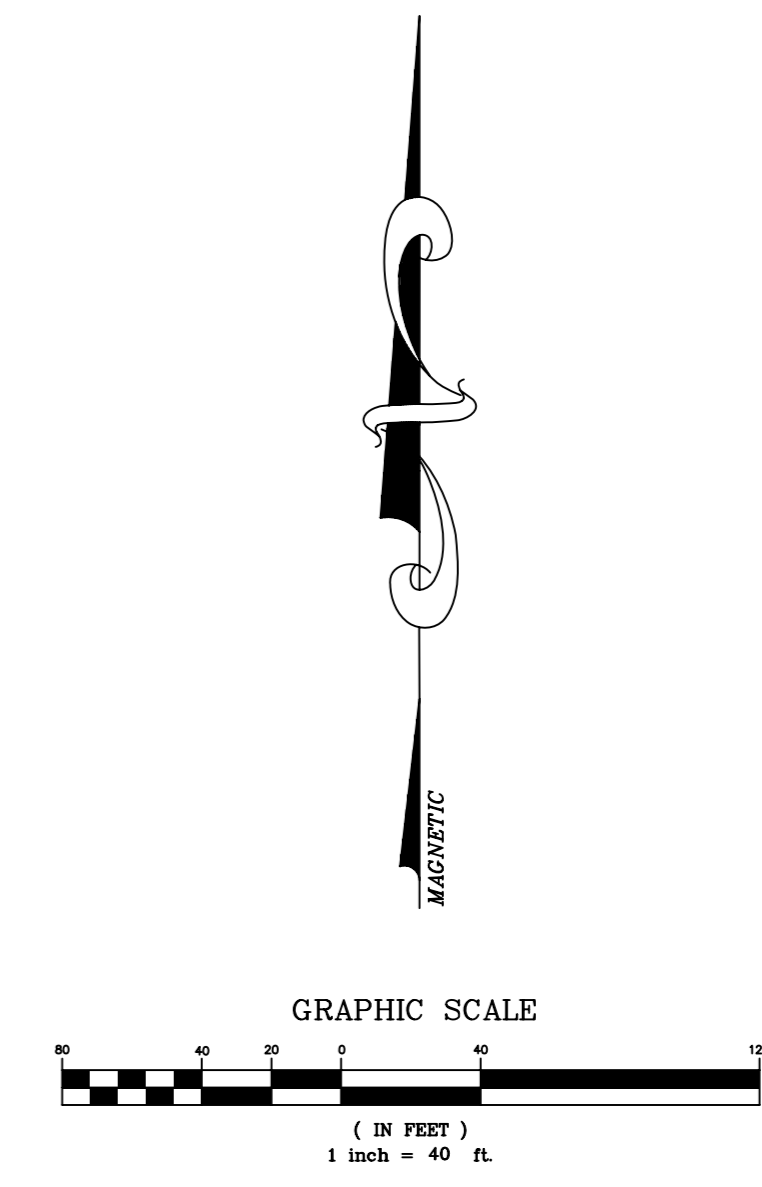
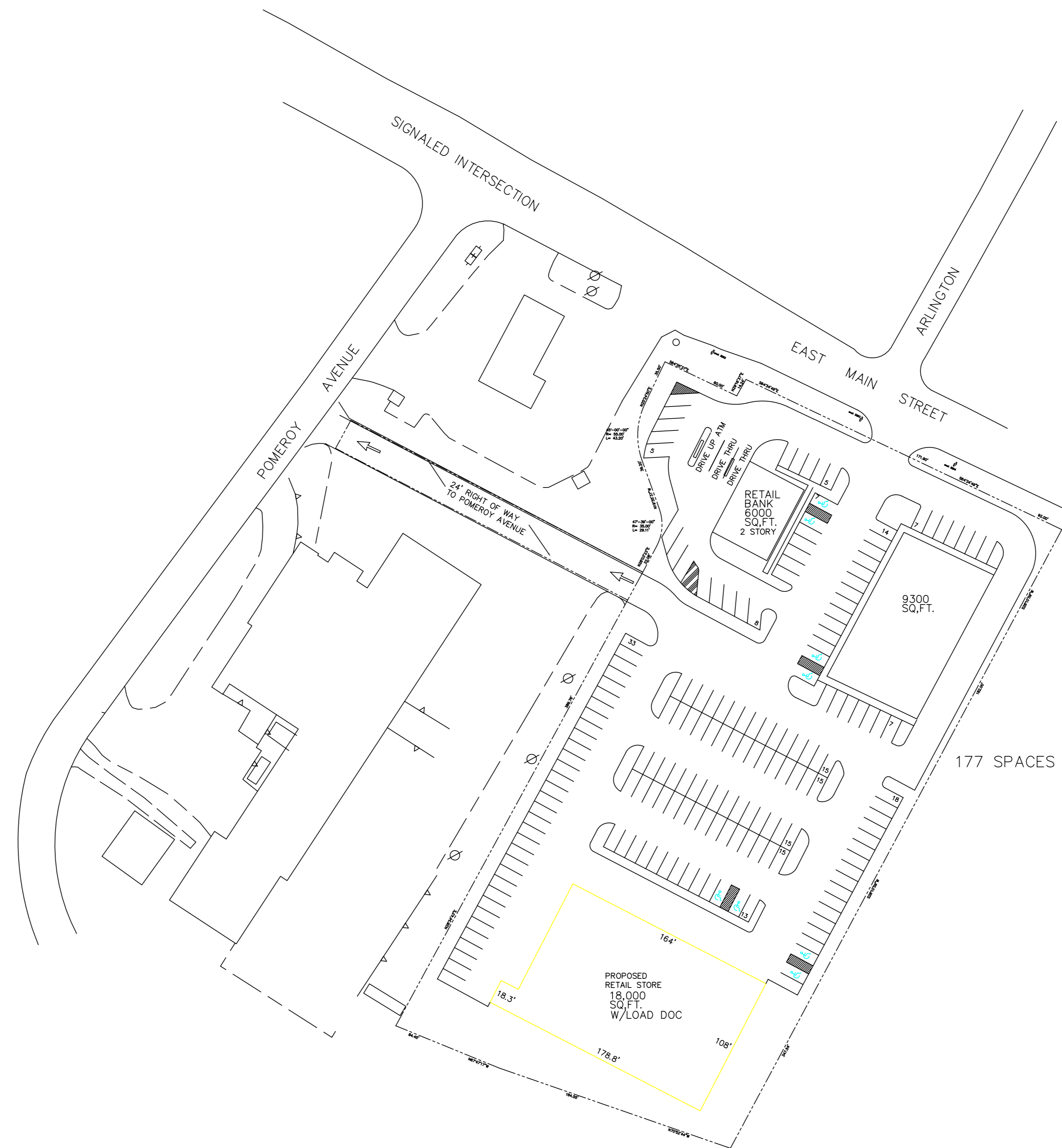
APPLICANT
NEWINGTON GAS DISTRIBUTORS, LLC
1185 EAST MAIN STREET
MERIDEN, CT

N/F DENNIS LEMAY
N/F DONALD G. WASHINGTON
N/F 30 POMEROY AVE. LLC

DATE: 6/10/07	DATE: 1-27	SCALE: CDE 0744	DATE: 0744
BY: [Signature]	BY: [Signature]	BY: [Signature]	BY: [Signature]



SCHMATIC
 LAYOUT PLAN
 FOR
 EAST MAIN STREET DEVELOPMENT
 POMEROY AVENUE
 MERIDEN, CONNECTICUT
 APRIL 3, 2007 SCALE 1"=40'



SCHEMATIC
 LAYOUT PLAN
 FOR
 EAST MAIN STREET DEVELOPMENT
 POMEROY AVENUE
 MERIDEN, CONNECTICUT
 APRIL 3, 2007 SCALE 1"=40'